

# Angular Contact Ball Bearings

Bearing No. : **NACHI 7228C**

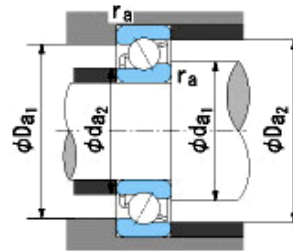
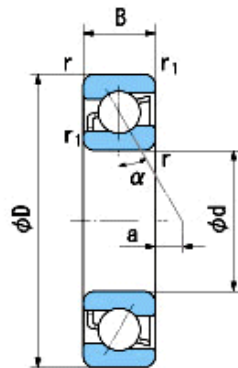
■ Bearing Type

■ Clearance

■ Tolerance Class

### Dimensions

d = 140<sup>0</sup><sub>-0.025</sub>  
 D = 250<sup>0</sup><sub>-0.030</sub>  
 B = 42<sup>0</sup><sub>-0.250</sub>  
 r = 3~5  
 (Radial Direction)  
 r = 3~8  
 (Axial Direction)  
 r1 = 1.1~2.5  
 (Radial Direction)  
 r1 = 1.1~4  
 (Axial Direction)  
 a = 1.3



### Dimensions

da1(min) = 154  
 da2(min) = 154  
 Da1(max) = 236  
 Da2(max) = 243  
 ra(max) = 2.5  
 ra1(max) = 1  
 Mass = 8.78 kg

Basic Dynamic Load Rating Cr : **223,000** N

Basic Static Load Rating Cor : **235,000** N

Limiting Speed ;

Grease Lubrication : **4,100** min<sup>-1</sup>

Oil Lubrication : **5,600** min<sup>-1</sup>

	INNER RING	OUTER RING
O.D.Surface Runout with Side :		-
Axial Runout with Bore :	-	-
Axial Runout with Raceway :	-	-
Width Variation :	<b>0.030</b>	<b>0.030</b>
Radial Runout :	<b>0.030</b>	<b>0.050</b>